

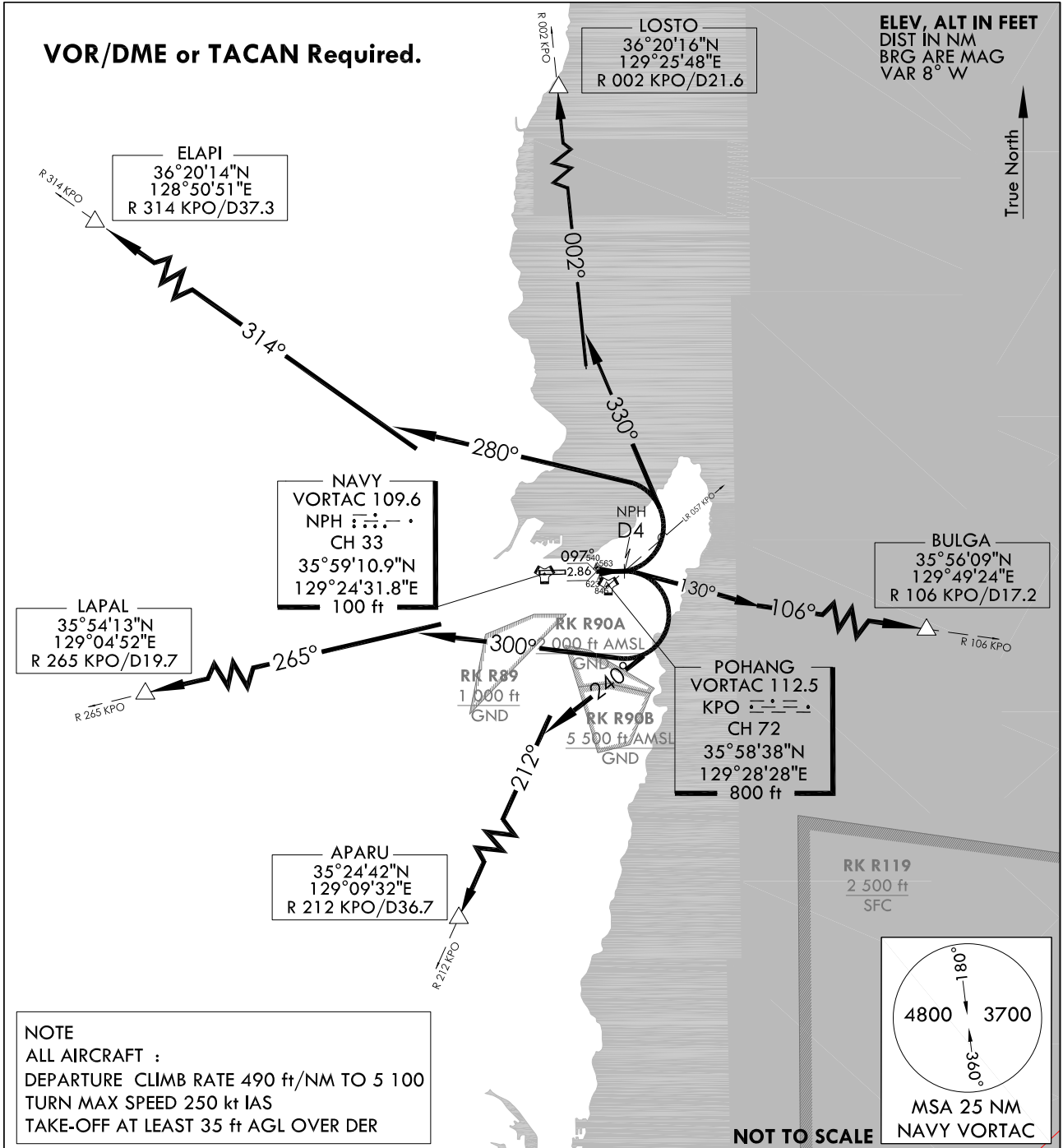
**STANDARD DEPARTURE
CHART - INSTRUMENT(SID)**

TRANSITION ALT 14 000
TRANSITION LVL FL 140

POHANG DEP 120.2 124.25
232.4
POHANG TWR 118.05 236.6
308.5

**POHANG/Pohang(RKTH)
RWY 10
POHANG 3**

Note : Departure under U.S. TERPS.



NOTE
ALL AIRCRAFT :
DEPARTURE CLIMB RATE 490 ft/NM TO 5 100
TURN MAX SPEED 250 kt IAS
TAKE-OFF AT LEAST 35 ft AGL OVER DER

DEPARTURE ROUTE DESCRIPTION

POHANG 3 DEPARTURE
RWY 10 : Climb HDG 097° to NPH 4 DME or cross LR 057 KPO, then via assigned transition routes.

The following transitions are ATC assigned only : Fly to intercept for en route.

- ELAPI Transition** :left turn HDG 280° to intercept R 314 KPO and R 314 KPO to ELAPI.
- LOSTO Transition** :left turn HDG 330° to intercept R 002 KPO and R 002 KPO to LOSTO.
- BULGA Transition** :right turn HDG 130° to intercept R 106 KPO and R 106 KPO to BULGA.
- APARU Transition** :right turn HDG 240° to intercept R 212 KPO and R 212 KPO to APARU.
- LAPAL Transition** :right turn HDG 300° to intercept R 265 KPO and R 265 KPO to LAPAL.

Change : Page control.

INTENTIONALLY

LEFT

BLANK

STANDARD DEPARTURE
CHART-INSTRUMENT(SID)

TRANSITION	ALT	14 000
TRANSITION	LVL	FL 140

POHANG DEP	124.25	120.2
	232.4	
POHANG TWR	118.05	236.6
	308.50	

POHANG/Pohang(RKTH)

RNAV(GNSS) DORTI 1
RWY 10

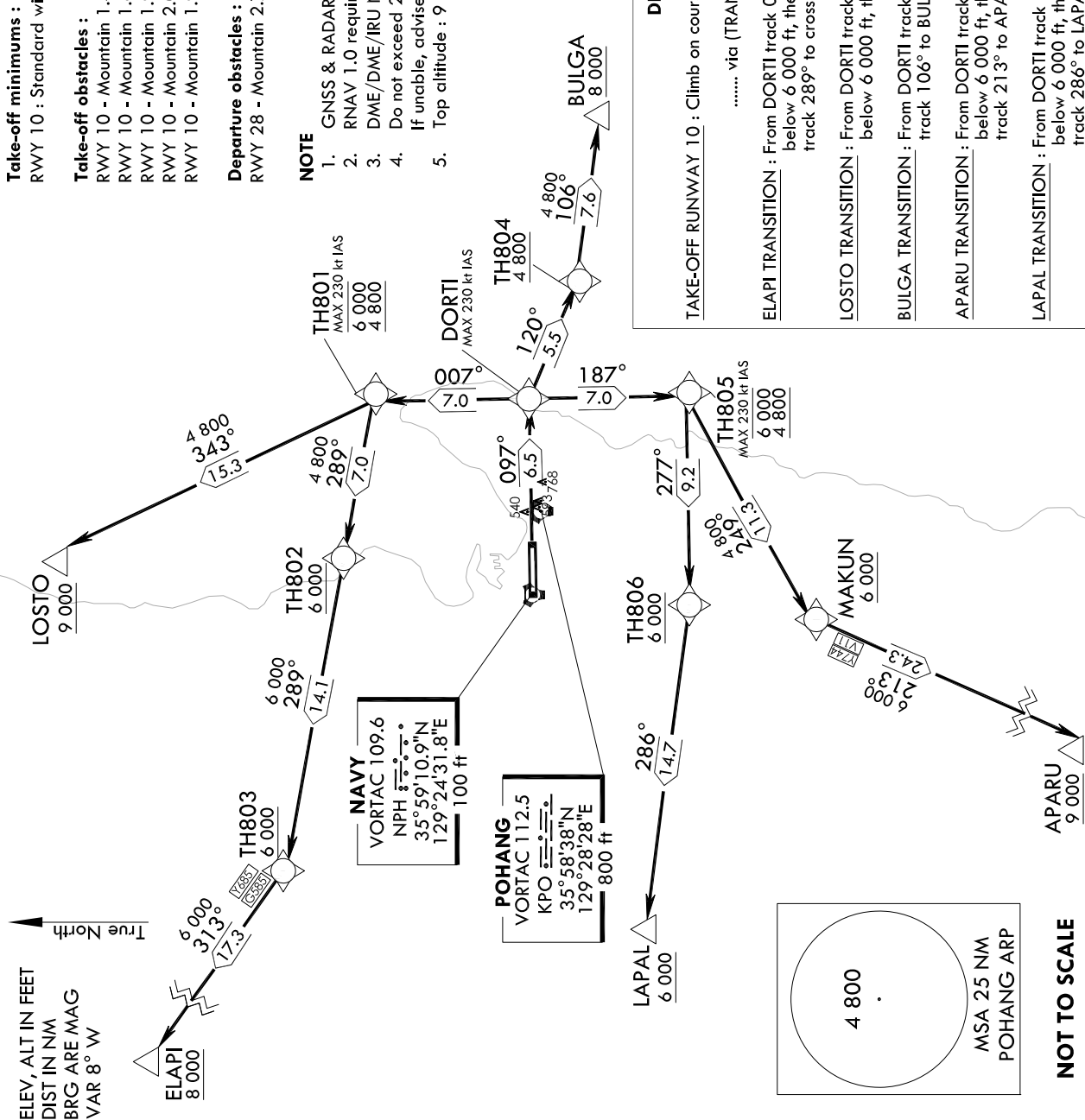
Note : Departure under U.S TERPS.

Take-off minimums :
RWY 10 : Standard with minimum climb of 490 ft/NM to 4 800 ft,

Take-off obstacles :
RWY 10 - Mountain 1.44 NM from DER, 1 024 ft left of centerline, 540 ft MSL.
RWY 10 - Mountain 1.63 NM from DER, 2 157 ft right of centerline, 623 ft MSL.
RWY 10 - Mountain 1.92 NM from DER, 2 677 ft right of centerline, 697 ft MSL.
RWY 10 - Mountain 2.05 NM from DER, 1 365 ft right of centerline, 722 ft MSL.
RWY 10 - Mountain 1.95 NM from DER, 1 338 ft left of centerline, 447 ft MSL.

Departure obstacles :
RWY 28 - Mountain 2.75 NM from DER, 768 ft MSL.

- NOTE**
- GNSS & RADAR Required.
 - RNAV 1.0 required.
 - DME/DME/IRU NA. (DME/DME Assessment : NOT CONDUCTED)
 - Do not exceed 230 kt IAS until TH801, TH805, if unable, advise ATC on initial contact.
 - Top altitude : 9 000 ft



DEPARTURE ROUTE DESCRIPTION

TAKE-OFF RUNWAY 10 : Climb on course 097° to DORTI, thence.....
..... via (TRANSITIONS routes) or expect climb assigned altitude by ATC.

ELAPI TRANSITION : From DORTI track 007° to cross TH801 at or above 4 800 ft and at or below 6 000 ft, then track 289° to cross TH802 at or above 6 000 ft, then track 289° to cross TH803 at or above 6 000 ft, then track 313° to ELAPI.

LOSTO TRANSITION : From DORTI track 007° to cross TH801 at or above 4 800 ft and at or below 6 000 ft, then track 343° to LOSTO.

BULGA TRANSITION : From DORTI track 120° to cross TH804 at or above 4 800 ft, then track 106° to BULGA.

APARU TRANSITION : From DORTI track 187° to cross TH805 at or above 4 800 ft and at or below 6 000 ft, then track 249° to cross MAKUN at or above 6 000 ft, then track 213° to APARU.

LAPAL TRANSITION : From DORTI track 187° to cross TH805 at or above 4 800 ft and at or below 6 000 ft, then track 277° to cross TH806 at or above 6 000 ft, then track 286° to LAPAL.

Change : Information of fix name(DARAN, PINUT → DORTI, MAKUN).

Standard Instrument Departure Procedure Coding Tables

RNAV DORTI 1 - ELAPI Transition

Serial Number	Path Descriptor	Waypoint Identifier	Fly-over	Course/Track °M(°T)	Distance (NM)	Turn direction	Altitude (ft)	Speed (kt)	Coordinates	VPA/TCH	Navigation specification	Remarks
001	CF	DORTI	-	097(089.3)	6.5	-	-	-230	35°59'21.9"N 129°33'56.6"E	-	RNAV 1	Bank Angle 23° CG 490 ft/ NM to 4 800 ft
002	TF	TH801	-	007(359.3)	7.0	-	-6 000 +4 800	-230	36°06'22.7"N 129°33'50.5"E	-	RNAV 1	Bank Angle 23° CG 490 ft/ NM to 4 800 ft
003	TF	TH802	-	289(280.8)	7.0	-	+6 000	-	36°07'41.0"N 129°25'21.0"E	-	RNAV 1	-
004	TF	TH803	-	289(280.7)	14.1	-	+6 000	-	36°10'16.4"N 129°08'17.0"E	-	RNAV 1	-
005	TF	ELAPI	-	313(305.3)	17.3	-	+8 000	-	36°20'14.1"N 128°50'50.9"E	-	RNAV 1	-

RNAV DORTI 1 - LOSTO Transition

Serial Number	Path Descriptor	Waypoint Identifier	Fly-over	Course/Track °M(°T)	Distance (NM)	Turn direction	Altitude (ft)	Speed (kt)	Coordinates	VPA/TCH	Navigation specification	Remarks
001	CF	DORTI	-	097(089.3)	6.5	-	-	-230	35°59'21.9"N 129°33'56.6"E	-	RNAV 1	Bank Angle 23° CG 490 ft/ NM to 4 800 ft
002	TF	TH801	-	007(359.3)	7.0	-	-6 000 +4 800	-230	36°06'22.7"N 129°33'50.5"E	-	RNAV 1	Bank Angle 23° CG 490 ft/ NM to 4 800 ft
003	TF	LOSTO	-	343(334.9)	15.3	-	+9 000	-	36°20'15.8"N 129°25'48.3"E	-	RNAV 1	-

RNAV DORTI 1 - BULGA Transition

Serial Number	Path Descriptor	Waypoint Identifier	Fly-over	Course/Track °M(°T)	Distance (NM)	Turn direction	Altitude (ft)	Speed (kt)	Coordinates	VPA/TCH	Navigation specification	Remarks
001	CF	DORTI	-	097(089.3)	6.5	-	-	-230	35°59'21.9"N 129°33'56.6"E	-	RNAV 1	Bank Angle 23° CG 490 ft/ NM to 4 800 ft
002	TF	TH804	-	120(112.4)	5.5	-	+4 800	-	35°57'15.5"N 129°40'12.9"E	-	RNAV 1	CG 490 ft/ NM to 4 800 ft
003	TF	BULGA	-	106(098.4)	7.6	-	+8 000	-	35°56'08.6"N 129°49'24.4"E	-	RNAV 1	-

RNAV DORTI 1 - APARU Transition

Serial Number	Path Descriptor	Waypoint Identifier	Fly-over	Course/Track °M(°T)	Distance (NM)	Turn direction	Altitude (ft)	Speed (kt)	Coordinates	VPA/TCH	Navigation specification	Remarks
001	CF	DORTI	-	097(089.3)	6.5	-	-	-230	35°59'21.9"N 129°33'56.6"E	-	RNAV 1	Bank Angle 23° CG 490 ft/ NM to 4 800 ft
002	TF	TH805	-	187(179.3)	7.0	-	-6 000 +4 800	-230	35°52'21.2"N 129°34'02.7"E	-	RNAV 1	Bank Angle 23° CG 490 ft/ NM to 4 800 ft
003	TF	MAKUN	-	249(241.2)	11.3	-	+6 000	-	35°46'53.0"N 129°21'52.8"E	-	RNAV 1	-
004	TF	APARU	-	213(204.5)	24.3	-	+9 000	-	35°24'42.1"N 129°09'32.1"E	-	RNAV 1	-

RNAV DORTI 1 - LAPAL Transition

Serial Number	Path Descriptor	Waypoint Identifier	Fly-over	Course/Track °M(°T)	Distance (NM)	Turn direction	Altitude (ft)	Speed (kt)	Coordinates	VPA/TCH	Navigation specification	Remarks
001	CF	DORTI	-	097(089.3)	6.5	-	-	-230	35°59'21.9"N 129°33'56.6"E	-	RNAV 1	Bank Angle 23° CG 490 ft/ NM to 4 800 ft
002	TF	TH805	-	187(179.3)	7.0	-	-6 000 +4 800	-230	35°52'21.2"N 129°34'02.7"E	-	RNAV 1	Bank Angle 23° CG 490 ft/ NM to 4 800 ft
003	TF	TH806	-	277(269.2)	9.2	-	+6 000	-	35°52'13.2"N 129°22'47.6"E	-	RNAV 1	-
004	TF	LAPAL	-	286(277.9)	14.7	-	+6 000	-	35°54'12.6"N 129°04'52.0"E	-	RNAV 1	-

Change : Information of fix name(DARAN, PINUT → DORTI, MAKUN).

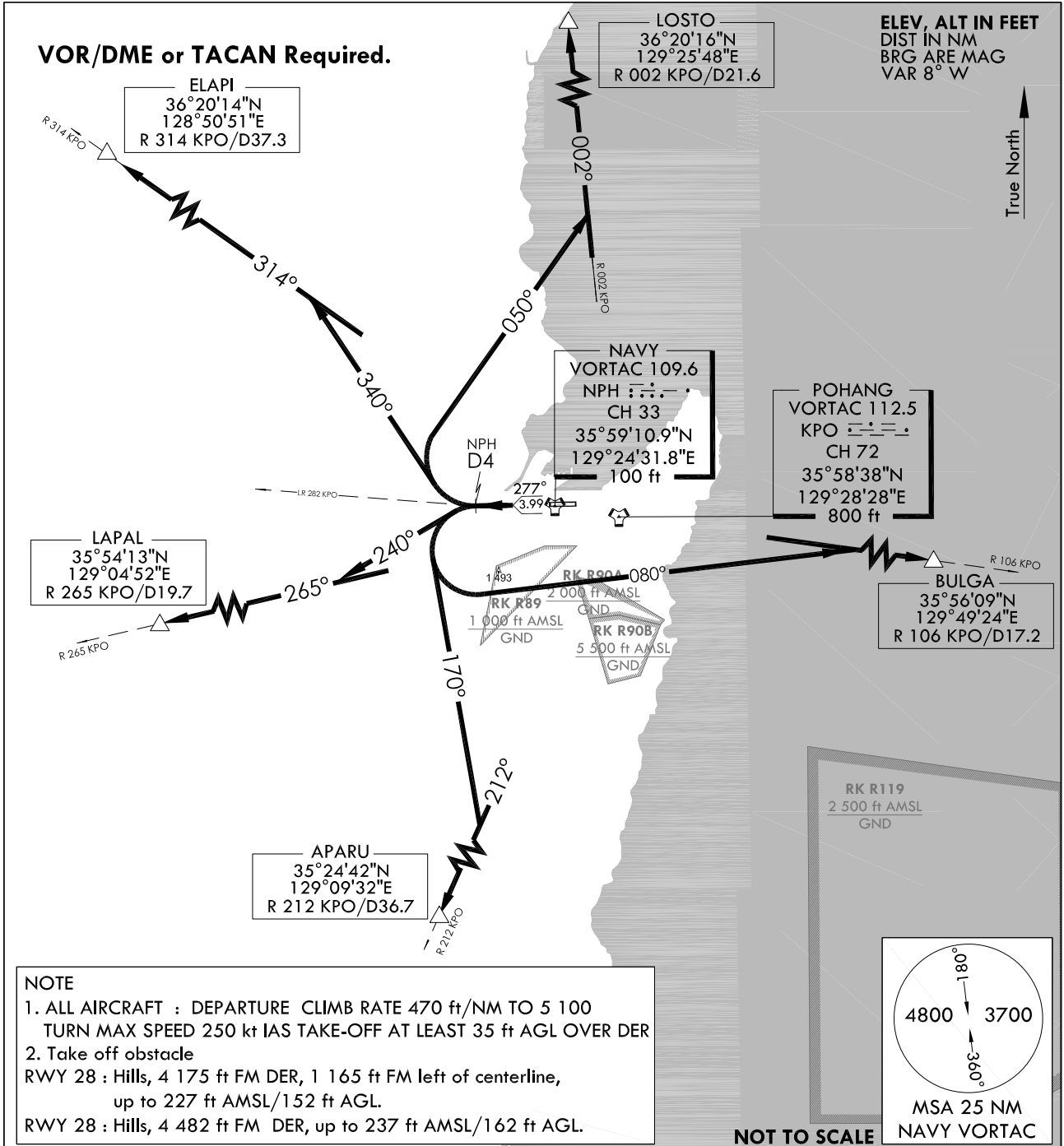
**STANDARD DEPARTURE
CHART - INSTRUMENT(SID)**

TRANSITION ALT 14 000
TRANSITION LVL FL 140

POHANG DEP 120.2 124.25
232.4
POHANG TWR 118.05 236.6
308.5

**POHANG/Pohang(RKTH)
RWY 28
POHANG 4**

Note : Departure under U.S. TERPS.



NOTE
1. ALL AIRCRAFT : DEPARTURE CLIMB RATE 470 ft/NM TO 5 100
TURN MAX SPEED 250 kt IAS TAKE-OFF AT LEAST 35 ft AGL OVER DER
2. Take off obstacle
RWY 28 : Hills, 4 175 ft FM DER, 1 165 ft FM left of centerline,
up to 227 ft AMSL/152 ft AGL.
RWY 28 : Hills, 4 482 ft FM DER, up to 237 ft AMSL/162 ft AGL.

DEPARTURE ROUTE DESCRIPTION

POHANG 4 DEPARTURE

RWY 28 : Climb HDG 277° to NPH 4 DME or cross LR 282 KPO, then via assigned transition routes.

The following transitions are ATC assigned only : Fly to intercept for en route.

- ELAPI Transition** :right turn HDG 340° to intercept R 314 KPO and R 314 KPO to ELAPI.
- LOSTO Transition** :right turn HDG 050° to intercept R 002 KPO and R 002 KPO to LOSTO.
- BULGA Transition** :left turn HDG 080° to intercept R 106 KPO and R 106 KPO to BULGA.
- APARU Transition** :left turn HDG 170° to intercept R 212 KPO and R 212 KPO to APARU.
- LAPAL Transition** :left turn HDG 240° to intercept R 265 KPO and R 265 KPO to LAPAL.

INTENTIONALLY

LEFT

BLANK

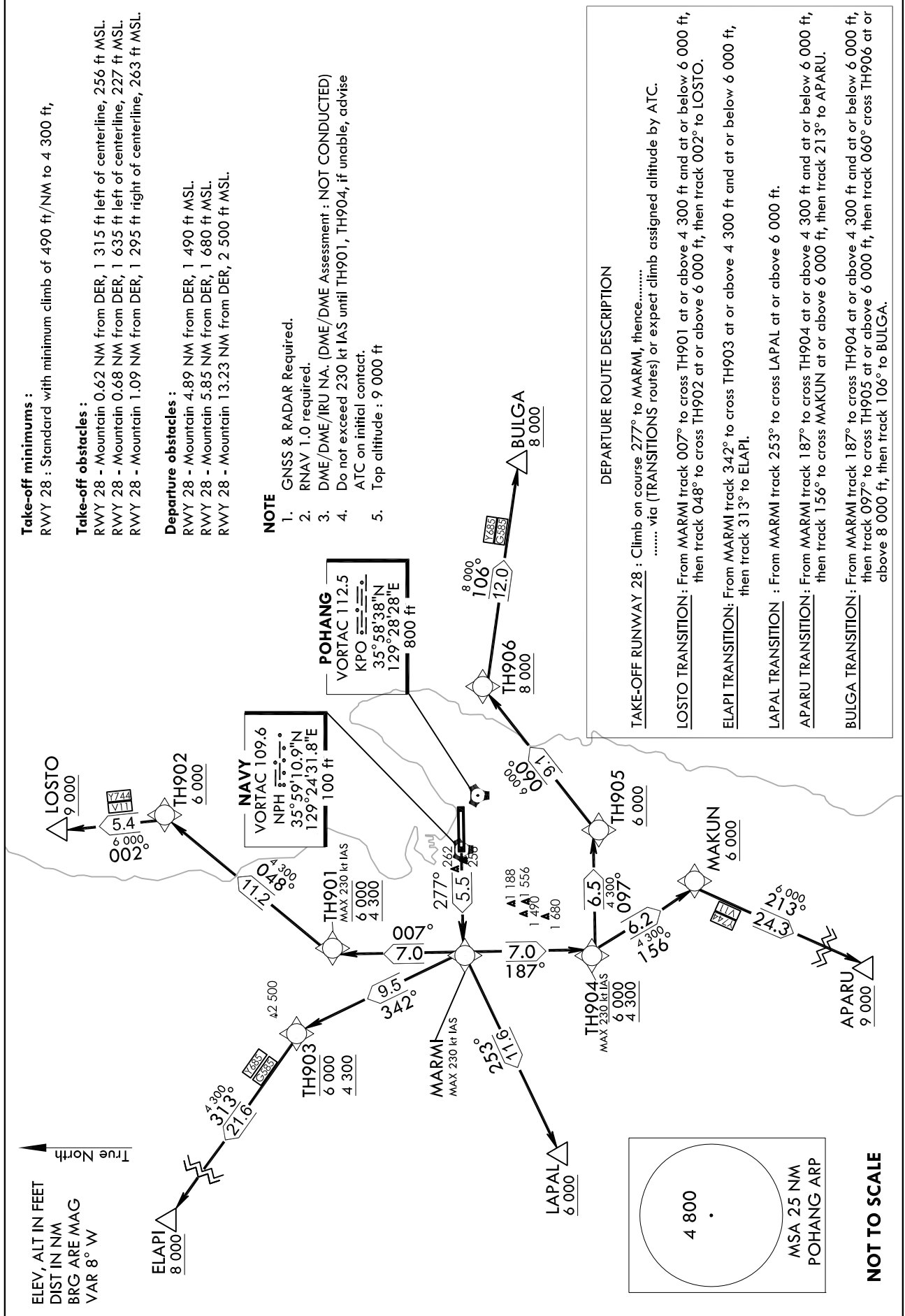
STANDARD DEPARTURE
CHART-INSTRUMENT(SID)

TRANSITION ALT	14 000
TRANSITION LVL	FL 140

POHANG DEP	124.25	120.2
	232.4	
POHANG TWR	118.05	236.6
	308.50	

POHANG/Pohang(RKTH)
RNAV(GNSS) MARM1 1
RWY 28

Note : Departure under U.S TERPS.



Change : Information of fix name(HIDOT, PINUT → MARM1, MAKUN).

Standard Instrument Departure Procedure Coding Tables

RNAV MARM1 1 - LOSTO Transition												
Serial Number	Path Descriptor	Waypoint Identifier	Fly-over	Course/Track °M(°T)	Distance (NM)	Turn direction	Altitude (ft)	Speed (kt)	Coordinates	VPA/TCH	Navigation specification	Remarks
001	CF	MARM1	-	277(269.2)	5.5	-	-	-230	35°59'11.5"N 129°17'44.0"E	-	RNAV 1	Bank Angle 23° CG 490 ft/ NM to 4 300 ft
002	TF	TH901	-	007(359.2)	7.0	-	-6 000 +4 300	-230	36°06'12.2"N 129°17'36.5"E	-	RNAV 1	Bank Angle 23° CG 490 ft/ NM to 4 300 ft
003	TF	TH902	-	048(039.7)	11.2	-	+6 000	-	36°14'50.3"N 129°26'28.6"E	-	RNAV 1	-
004	TF	LOSTO	-	002(354.3)	5.4	-	+9 000	-	36°20'15.8"N 129°25'48.3"E	-	RNAV 1	-
RNAV MARM1 1 - ELAPI Transition												
Serial Number	Path Descriptor	Waypoint Identifier	Fly-over	Course/Track °M(°T)	Distance (NM)	Turn direction	Altitude (ft)	Speed (kt)	Coordinates	VPA/TCH	Navigation specification	Remarks
001	CF	MARM1	-	277(269.2)	5.5	-	-	-230	35°59'11.5"N 129°17'44.0"E	-	RNAV 1	Bank Angle 23° CG 490 ft/ NM to 4 300 ft
002	TF	TH903	-	342(334.3)	9.5	-	-6 000 +4 300	-	36°07'45.8"N 129°12'39.2"E	-	RNAV 1	CG 490 ft/ NM to 4 300 ft
003	TF	ELAPI	-	313(305.3)	21.6	-	+8 000	-	36°20'14.1"N 128°50'50.9"E	-	RNAV 1	-
RNAV MARM1 1 - LAPAL Transition												
Serial Number	Path Descriptor	Waypoint Identifier	Fly-over	Course/Track °M(°T)	Distance (NM)	Turn direction	Altitude (ft)	Speed (kt)	Coordinates	VPA/TCH	Navigation specification	Remarks
001	CF	MARM1	-	277(269.2)	5.5	-	-	-230	35°59'11.5"N 129°17'44.0"E	-	RNAV 1	Bank Angle 23° CG 490 ft/ NM to 4 300 ft
002	TF	LAPAL	-	253(244.6)	11.6	-	+6 000	-	35°54'12.6"N 129°04'52.0"E	-	RNAV 1	CG 490 ft/ NM to 4 300 ft
RNAV MARM1 1 - APARU Transition												
Serial Number	Path Descriptor	Waypoint Identifier	Fly-over	Course/Track °M(°T)	Distance (NM)	Turn direction	Altitude (ft)	Speed (kt)	Coordinates	VPA/TCH	Navigation specification	Remarks
001	CF	MARM1	-	277(269.2)	5.5	-	-	-230	35°59'11.5"N 129°17'44.0"E	-	RNAV 1	Bank Angle 23° CG 490 ft/ NM to 4 300 ft
002	TF	TH904	-	187(179.2)	7.0	-	-6 000 +4 300	-230	35°52'10.8"N 129°17'51.6"E	-	RNAV 1	Bank Angle 23° CG 490 ft/ NM to 4 300 ft
003	TF	MAKUN	-	156(148.3)	6.2	-	+6 000	-	35°46'53.0"N 129°21'52.8"E	-	RNAV 1	-
004	TF	APARU	-	213(204.5)	24.3	-	+9 000	-	35°24'42.1"N 129°09'32.1"E	-	RNAV 1	-
RNAV MARM1 1 - BULGA Transition												
Serial Number	Path Descriptor	Waypoint Identifier	Fly-over	Course/Track °M(°T)	Distance (NM)	Turn direction	Altitude (ft)	Speed (kt)	Coordinates	VPA/TCH	Navigation specification	Remarks
001	CF	MARM1	-	277(269.2)	5.5	-	-	-230	35°59'11.5"N 129°17'44.0"E	-	RNAV 1	Bank Angle 23° CG 490 ft/ NM to 4 300 ft
002	TF	TH904	-	187(179.2)	7.0	-	-6 000 +4 300	-230	35°52'10.8"N 129°17'51.6"E	-	RNAV 1	Bank Angle 23° CG 490 ft/ NM to 4 300 ft
003	TF	TH905	-	097(089.2)	6.5	-	+6 000	-	35°52'16.2"N 129°25'51.6"E	-	RNAV 1	-
004	TF	TH906	-	060(052.0)	9.1	-	+8 000	-	35°57'53.7"N 129°34'43.8"E	-	RNAV 1	-
005	TF	BULGA	-	106(098.3)	12.0	-	+8 000	-	35°56'08.6"N 129°49'24.4"E	-	RNAV 1	-

Change : Information of fix name(HIDOT, PINUT → MARM1, MAKUN).